

JOSIE PERRY & DAPHNE SIMONS



JOSIE PERRY
& DAPHNE SIMONS
Tamara and the Swan

28 April – 11 June 2023

San Mei Gallery is pleased to present *Tamara and the Swan* by Josie Perry and Daphne Simons. This will be the inaugural exhibition in San Mei Gallery's new public-facing window space.

Josie Perry and Daphne Simons's collaborative practice expands the fictional world of comics through video, multimedia installations, sculpture and drawing. Their comic book series *Plasma Springs* stems from a quick-fire script writing process fictionalising figures from art history and popular media, a form of surreal homage that is absurd, sincere, irreverent and camp. Presented in this exhibition is a single artwork, *Tamara and the Swan*, one of a series of colour pencil drawings produced by Josie Perry that crystallise scenarios and encounters between characters from the worlds of their collaboratively produced comic.

The latest instalment of the comic, *Plasma Spring: Halloweel* (Glom Press, 2022), borrows elements from the biography of painter Leonor Fini to reimagine the much-mythologised scene of queer women in 1930s interwar Paris. A whirlwind vampire narrative involving eel-infested royals, frozen swans and a sapphic commune ensues in Fini's Parisian apartment.

Riffing on the lesbian vampire horror trope, Perry and Simons exploit the vampire genre to irreverently imagine representations of queer family and polyamorous relationships.

Tamara and the Swan depicts a moment in the story where a vampiric Tamara, based on Art Deco painter Tamara de Lempicka and her painting *Young Lady with Gloves* (1930), is fighting a swan in the bathroom of Fini's apartment. Several swans trapped for centuries within ice sculptures that doubled as bathroom fittings have broken free due to the rising temperature in the apartment, caused by the arrival of several winged poodles intent on saving the comic's main character, Pauline, from the sapphic vampires.

For sales enquiries please contact
rufus@sanmeigallery.co.uk.



Tamara and the Swan
2022

Josie Perry, produced within the framework of
collaborative project 'Plasma Spring' with Daphne
Simons.

42 x 59.4 cm

colour pencil on paper
framed

Produced within the framework of collaborative project
'Plasma Spring' with Daphne Simons

£1500

SMG-JOPE-002



Leonor's Bathroom
2022

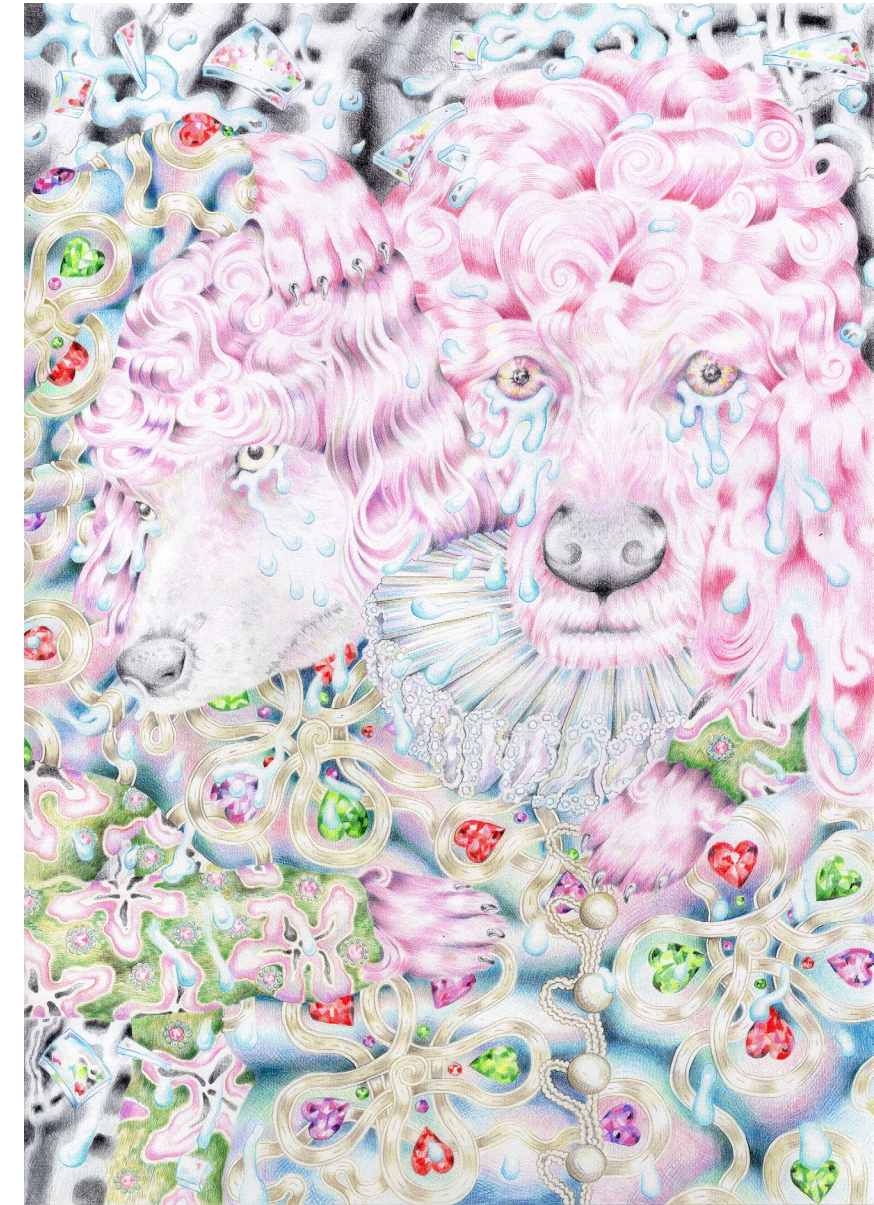
Josie Perry, produced within the framework of
collaborative project 'Plasma Spring' with Daphne Simons.
colour pencil on paper
29.7 x 42 cm
framed

Produced within the framework of collaborative project
'Plasma Spring' with Daphne Simons

£1000

SMG-JOPE-003





Betrayal Hurts
2022

Josie Perry, produced within the framework of
collaborative project 'Plasma Spring' with Daphne Simons.
colour pencils on paper
29.7 x 42 cm
framed

Produced within the framework of collaborative project
'Plasma Spring' with Daphne Simons

£1000

SMG-JOPE-004

Artist biographies

Josie Perry and Daphne Simons have been collaborating since 2019, when they self-published their first comic Plasma Spring. They have since released three more comics, the most recent published by Glom Press (2022) and PrintRoom Rotterdam (2021). Expanding from the fictional world of the comics, their work also includes video, multimedia installations, sculpture, and colour pencil drawings by Josie. Recent exhibitions include at 16 Nicholson Street (Glasgow), Stichting SIGN (Gröningen), Het Archief (Rotterdam), Alta Art Space (Malmö) and The Audio Foundation (Auckland). They have shown video work online for WET Film, and presented a show on Radio Sloppy (Bruges).

Josie Perry has also exhibited and performed at Kunstinstituut Melly (Rotterdam), Centre Cívic Can Felipa (Barcelona), Stichting Perdu (Amsterdam), Twenty One, venue of Focal Point Gallery (Southend-on-Sea), DE PLAYER (Rotterdam), LaVallée, (Brussels), Torpedo theater (Amsterdam) and Joey Ramone Gallery (Rotterdam). She is part of the Glasgow CCA Intermedia Gallery's upcoming programme and will present a collaborative exhibition with Francis Jones in 2024. Her MFA at the Piet Zwart Institute was funded by the Leverhulme Trust.

Daphne Simons has also exhibited and performed at Te Tuhi Art Gallery (Tāmaki Makaurau, Auckland), The Performance Arcade (Te Whanganui-a-Tara, Wellington); Pension Lutz (Munich); RM Gallery (Tāmaki Makaurau, Auckland); Artspace Aotearoa (Tāmaki Makaurau, Auckland); Enjoy Contemporary Art Space (Te Whanganui-a-Tara, Wellington); Blue Oyster; (Ōtepoti, Dunedin) and The Physics Room (Ōtautahi, Christchurch).

The Window Gallery

Tamara and the Swan is the inaugural show in San Mei Gallery's new public-facing Window Gallery, presenting a series of micro-exhibitions by emerging contemporary artists. Open 24 hours a day, this new programming strand facilitates responsive and exciting small-scale exhibitions in a hypervisible context. All artworks are available for sale, supporting emerging artists with income as well as fundraising for San Mei Gallery's other non-commercial artistic programmes.

SMG is a registered Community Interest Company. All funds raised go back into our programme, with a focus on supporting emerging research-led practitioners through solo and group exhibitions and educational programmes.

For sales enquiries, please contact
rufus@sanmeigallery.co.uk

San Mei Gallery
39a Loughborough Road
London SW9 7TB

www.sanmeigallery.co.uk
info@sanmeigallery.co.uk
[@sanmeigallery](https://www.instagram.com/sanmeigallery)